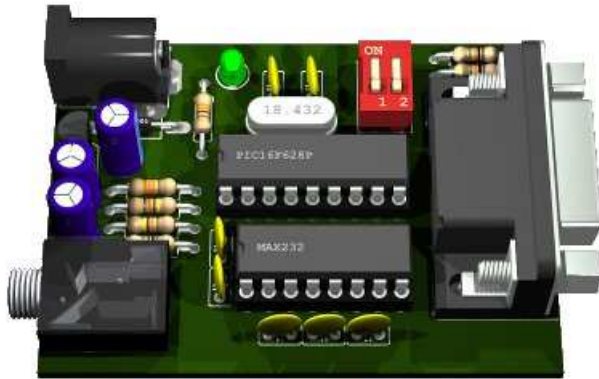


Manual FSK2Serial Interface



Firmware version: 1_00

Power Supply: 8 – 15 Volt

Plus is inner conductor, minus is outer conductor. Inner diameter 1.95 – 2.1 mm, outer diameter 5 – 5.5 mm. A cheap universal DC-adapter usually contains such a plug. The interface is protected against wrong polarity by a diode. A voltage regulator stabilizes the voltage to +5 Volt. Power consumption is about 50 mA max.

Serial port

The serial port transmits standard RS232 data. 19200 bit/s, 1 start bit, 8 data bits, 1 stop bit. There is no handshake with the PC.

DIP-switches

The interface supports 4 pre-programmed data rates: 512, 1200/2400 (POCSAG), 1600 (FLEX) and 8000 bit/s (Mobitex). The speed is selected with the DIP switches:



512
off - off



1600
on - off



1200/2400
off - on



8000 bit/s
on - on

After selecting a different speed, the interface needs to be restarted: simply disconnect and reconnect the power supply.

LED

After the power is connected, the LED flashes: 4 times short and one time long, followed by 1, 2, 3 or 4 flashes depending on the DIP switch settings.

After that, the LED acts as a quality indication. Without signal, the LED is off. When noise is being received, the LED flashes randomly. When a signal is being received corresponding to the DIP switch settings, the LED will light almost constantly.